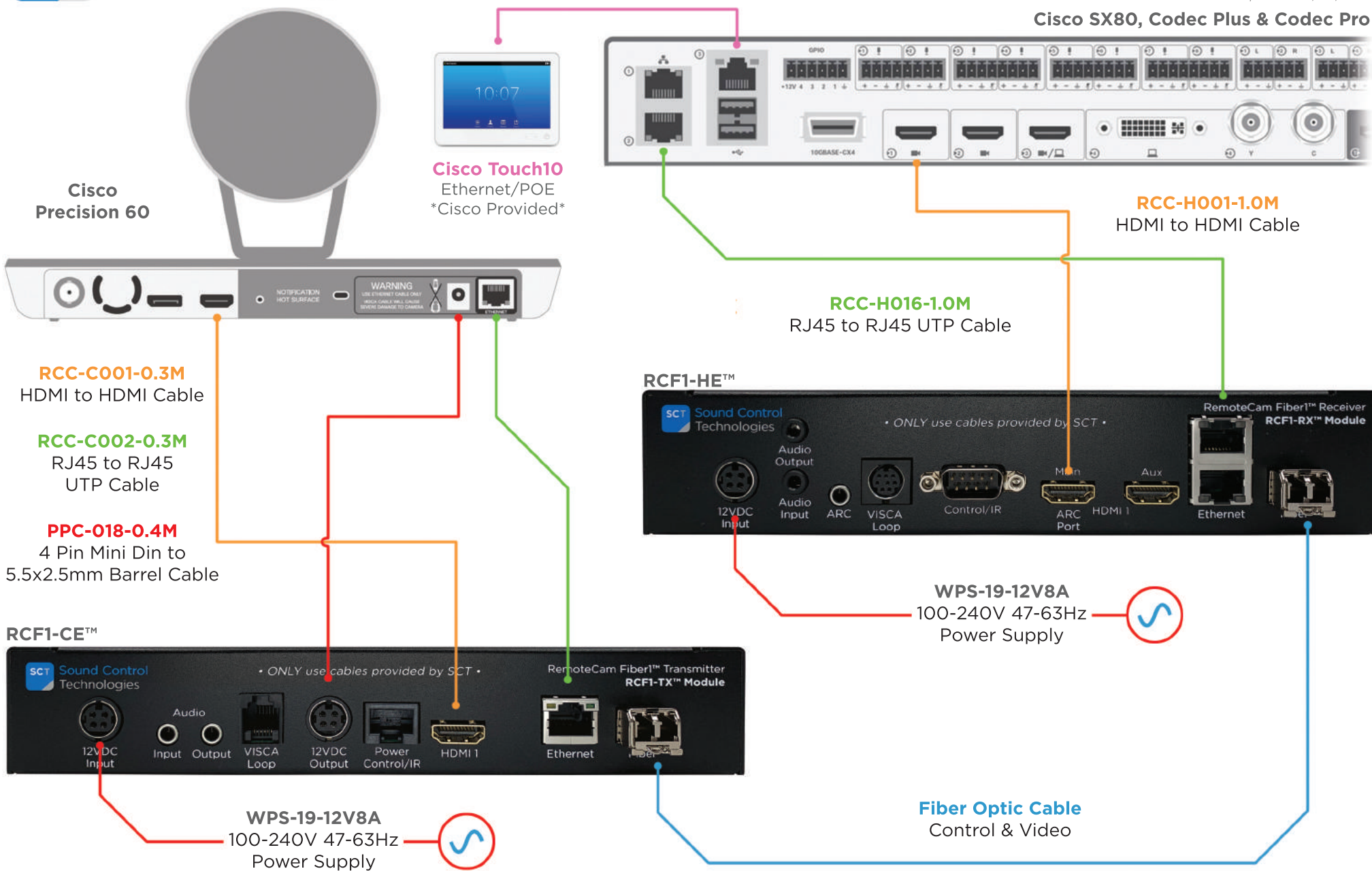




Cisco SX80, Codec Plus & Codec Pro



Module Dimensions

RCF1-CE™ Transmitter: 8.25" W x 1.25"H x 4.25"D

RCF1-HE™ Receiver: 8.25"W x 1.75"H x 4.25"D

Provided SFP: 10Gtek - 10 Gigabit SFP+ LC Multi-Mode Transceiver (850nm, DDM, 300m)
Recommended Fiber Type: OM3 LC LC Fiber Patch Cable, 10Gb Duplex 50/125 LC to LC Multimode