

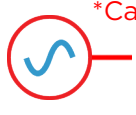


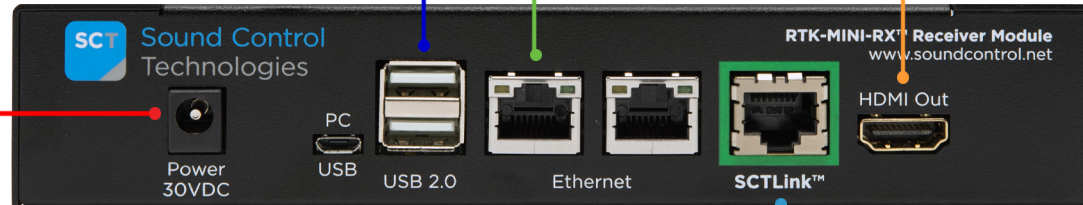
Poly G7500

RCC-M005-0.3M
USB-A (RTK-MINI-RX™) to USB-C

RCC-C001-0.3M
HDMI to HDMI Video Cable

RCC-C002-0.3M
RJ45 to RJ45 UTP Control Cable

 *Can be used on Tx or Rx.*
WPS-12 30VDC
100-240V 47-63Hz
Power Supply



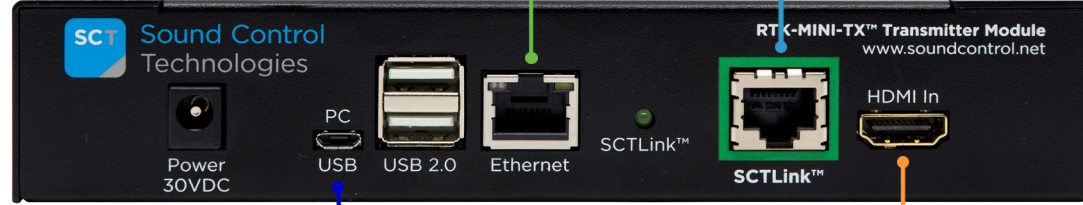
RTK-MINI-RX™
Receiver Module

SCTLink™ Cable
Ethernet/POE | HDMI | USB
The SCTLink™ cable must always be a single, point-to-point CAT cable with no couplers or interconnections.

RCC-H016-1.0M
RJ45 to RJ45 UTP Control Cable



Poly TC8
Ethernet/POE
"Poly Provided"



RTK-MINI-TX™
Transmitter Module

RCC-M006-1.0M
USB Micro B (RTK-MINI-TX™) to USB-A

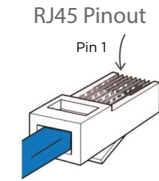


Laptop

RCC-H001-1.0M
HDMI to HDMI Video Cable

SCTLink™ Cable Specs

Integrator-Supplied CAT6 STP/UTP Cable
T568A or T568B (10m-100m min/max Length)



Module Dimensions

RTK-MINI-TX™: **H:** 1.394" (35mm) x **W:** 7.283" (185mm) x **D:** 4.484" (114mm)

RTK-MINI-RX™: **H:** 1.394" (35mm) x **W:** 7.283" (185mm) x **D:** 4.484" (114mm)