

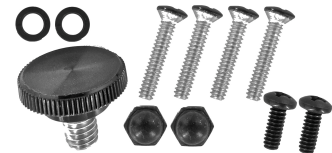
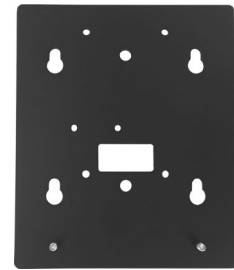


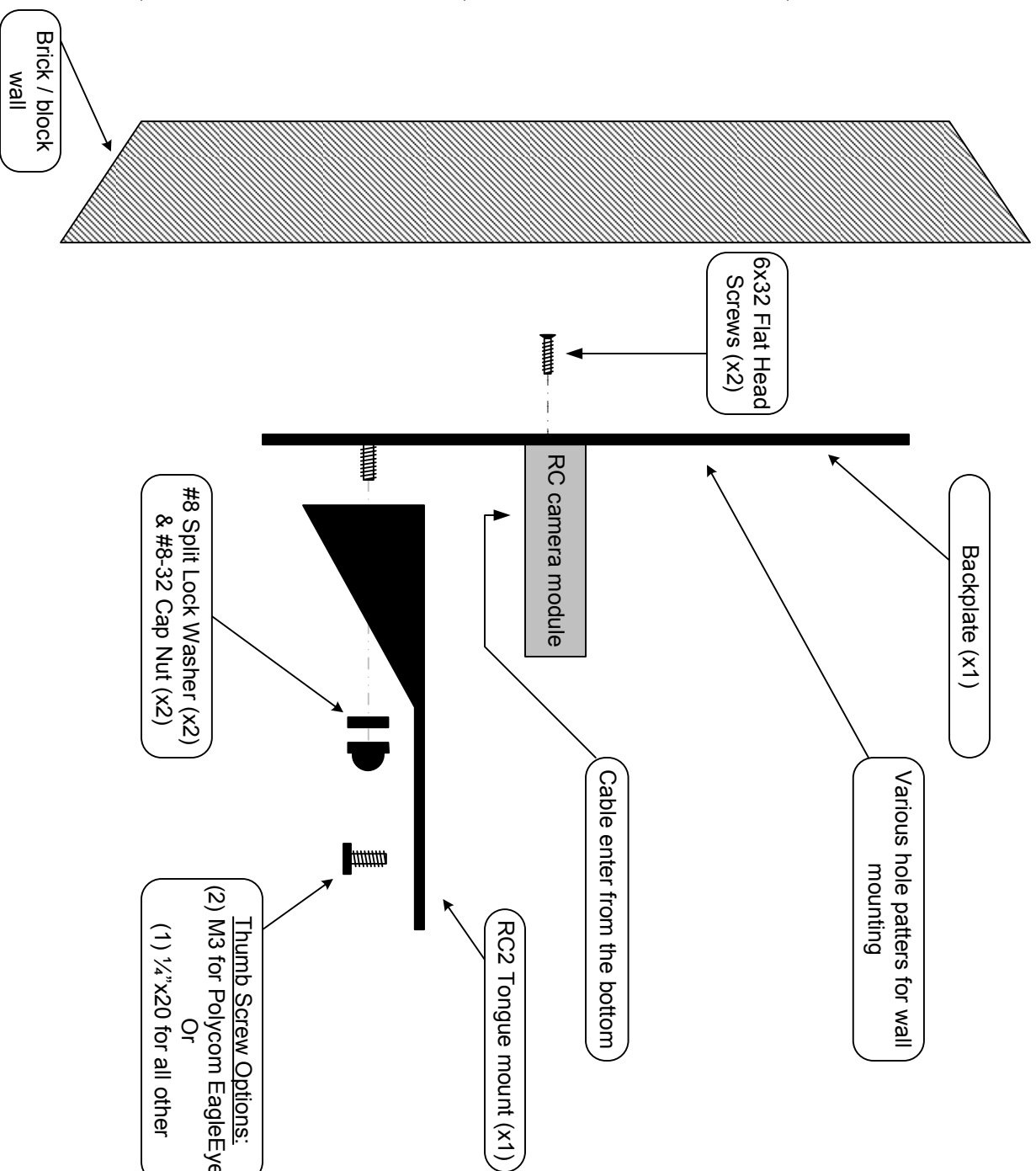
WALL MOUNT KIT RC2-P3



PARTS LIST:

- 1 Tongue Mount (ENC-1068-POLY- 0)
- 1 Backplate (ENC-1068-FACE-1)
- 1 H/W Kit:
 - 2pc, 8-32 Black Cap Nuts (5/16 nut-driver)
 - 2pc, #8 Split washer, Black
 - 4pc, 6-32 x 3/4" L, Phillips oval head screw, Black head
 - 2pc, 6-32 x 3/8" L, Phillips pan head, Black screws
 - 4pc, M3x6mm Thumb screws, black
- 1 Installation Instruction





NOTICE:
THIS DOCUMENT HAS BEEN RELEASED FOR REVIEW ONLY.
NO TRANSFER OF OWNERSHIP IS INTENDED OR IMPLIED.
THIS DOCUMENT CONTAINS INFORMATION PROPRIETARY TO SCT AND IS NOT TO BE DISCLOSED OR REPRODUCED WITHOUT PRIOR CONSENT OF SCT.