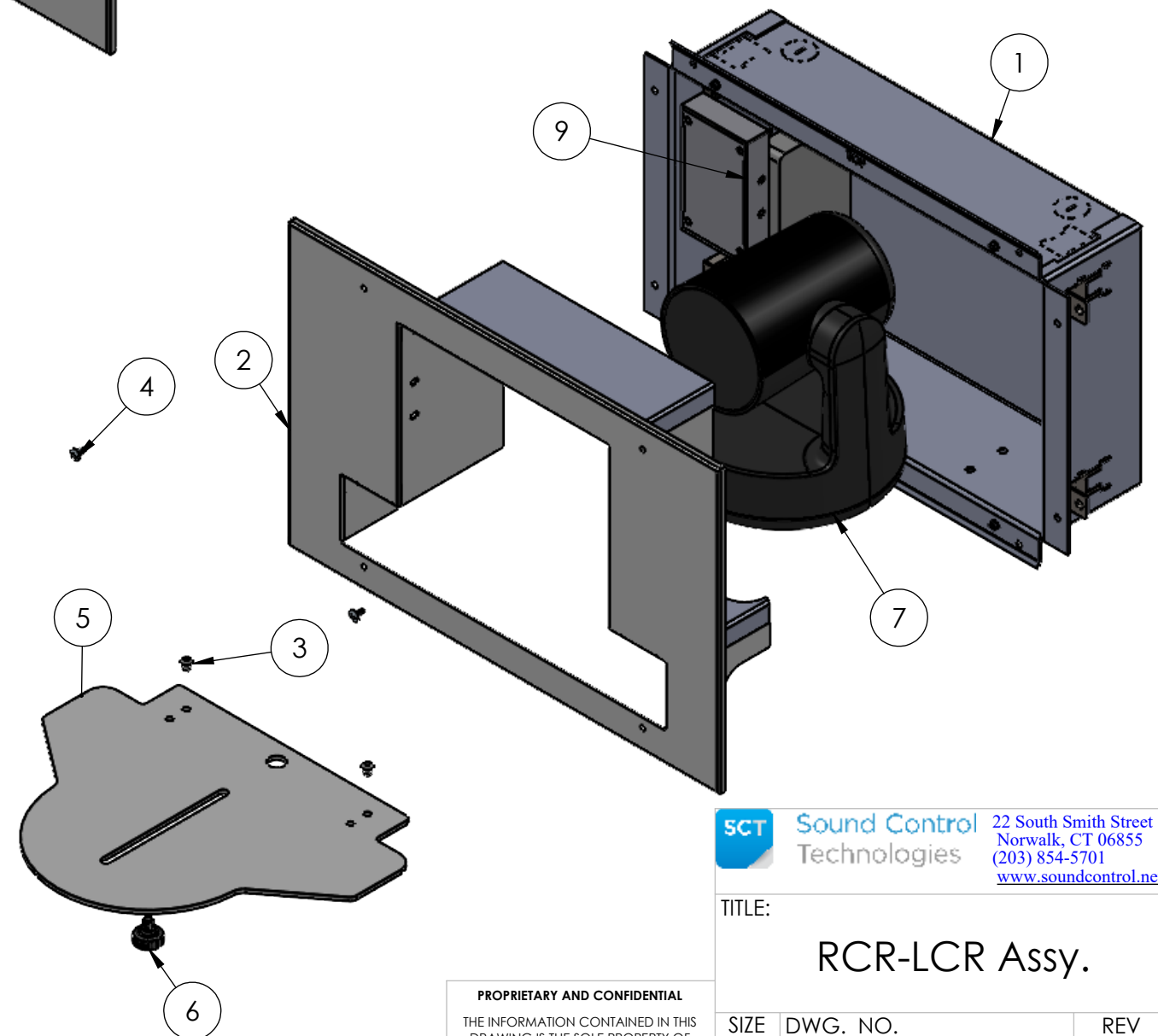
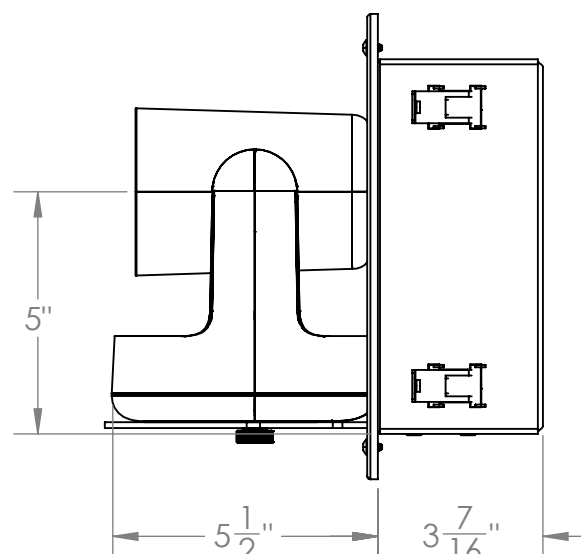
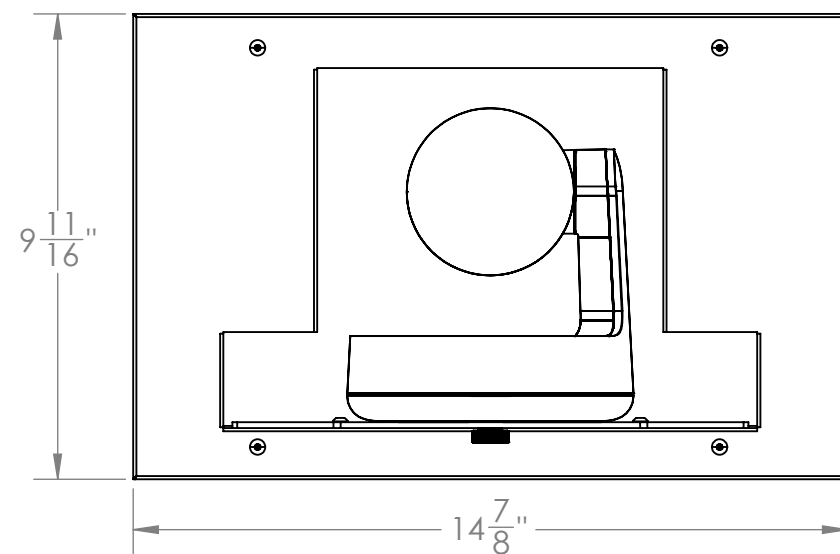


Rally Power Splitter



ITEM NO.	PART NUMBER	DESCRIPTION	QTY.
1	800-1119	RCR-Basic Assembly	1
2	800-1120	RCR-PH1-B (RCR BZL)	1
3	860-0015	Machine Screw 8/32x1/4" Pan Head Torx Zinc	2
4	860-0013	Machine Screw 6/32x5/16"Truss Head Torx White	4
5	803-1118	RCR SR1/SR2, Rally Shelf	1
6	860-0043	Thumb Screw 1/4"-20x3/8",SS	1
7	Rally Camera	Not Supplied Logitech Rally Camera	1
8	Rally Camera Powersplitter Box	Not Supplied	1
9	800-1137	Not Supplied RCU2 Camera End Module Case	1

SCT Sound Control Technologies
22 South Smith Street
Norwalk, CT 06855
(203) 854-5701
www.soundcontrol.net

TITLE:
RCR-LCR Assy.

SIZE B	DWG. NO. 800-1119-02	REV A
NAME	G.E.G.	DATE 7/21/2023
		SHEET 1 OF 1

PROPRIETARY AND CONFIDENTIAL
THE INFORMATION CONTAINED IN THIS
DRAWING IS THE SOLE PROPERTY OF
Sound Control Tech. ANY
REPRODUCTION IN PART OR AS A WHOLE
WITHOUT THE WRITTEN PERMISSION OF
Sound Control Tech. IS PROHIBITED.