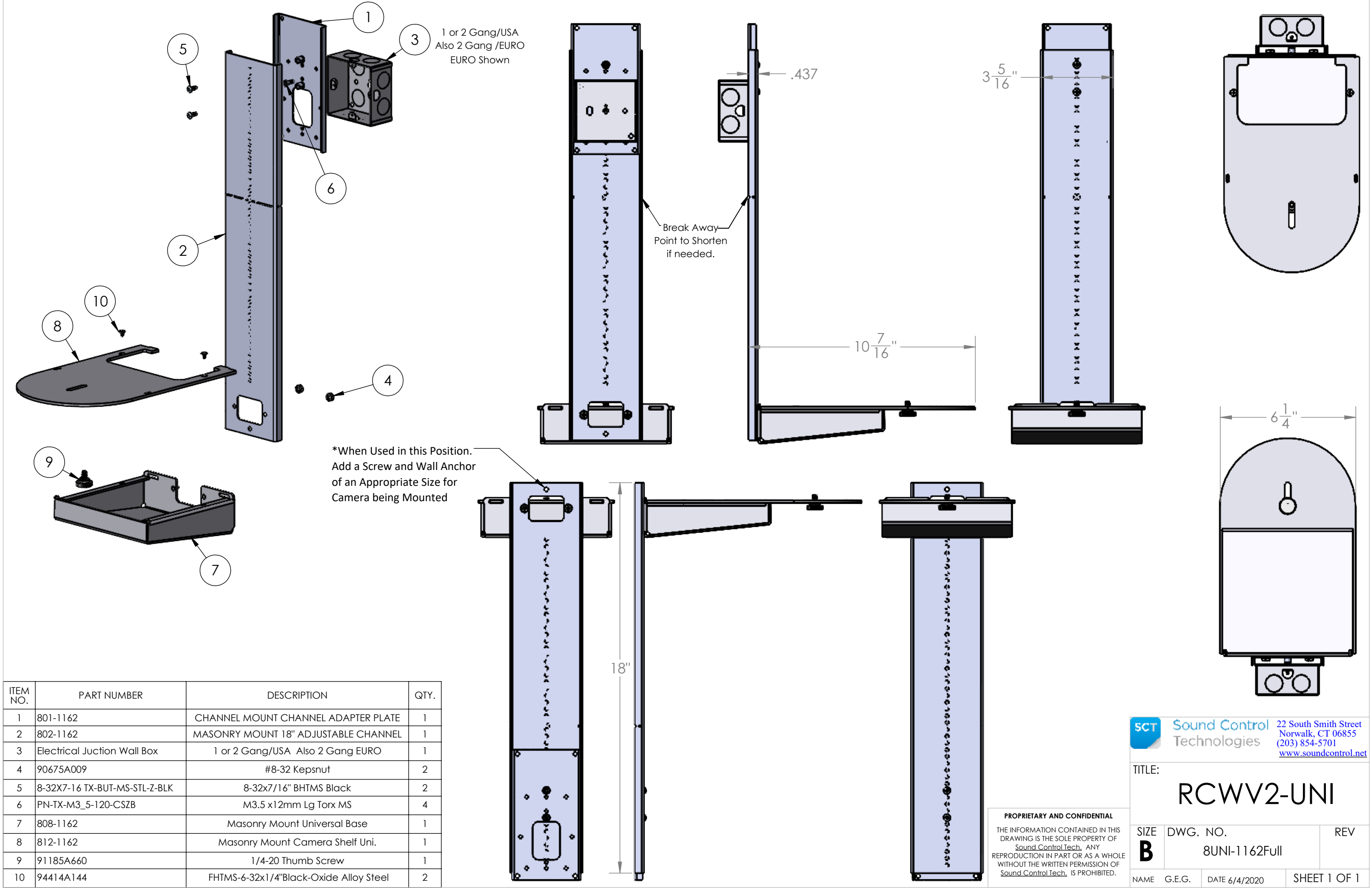


1 or 2 Gang/USA
Also 2 Gang /EURO
EURO Shown

Break Away
Point to Shorten
if needed.

*When Used in this Position.
Add a Screw and Wall Anchor
of an Appropriate Size for
Camera being Mounted



ITEM NO.	PART NUMBER	DESCRIPTION	QTY.
1	801-1162	CHANNEL MOUNT CHANNEL ADAPTER PLATE	1
2	802-1162	MASONRY MOUNT 18" ADJUSTABLE CHANNEL	1
3	Electrical Junction Wall Box	1 or 2 Gang/USA Also 2 Gang EURO	1
4	90675A009	#8-32 Kepsnut	2
5	8-32X7-16 TX-BUT-MS-STL-Z-BLK	8-32x7/16" BHTMS Black	2
6	PN-TX-M3_5-120-CSZB	M3.5 x12mm Lg Torx MS	4
7	808-1162	Masonry Mount Universal Base	1
8	812-1162	Masonry Mount Camera Shelf Uni.	1
9	91185A660	1/4-20 Thumb Screw	1
10	94414A144	FHTMS-6-32x1/4"Black-Oxide Alloy Steel	2

PROPRIETARY AND CONFIDENTIAL
THE INFORMATION CONTAINED IN THIS
DRAWING IS THE SOLE PROPERTY OF
Sound Control Tech. ANY
REPRODUCTION IN PART OR AS A WHOLE
WITHOUT THE WRITTEN PERMISSION OF
Sound Control Tech. IS PROHIBITED.

SCT Sound Control Technologies
22 South Smith Street
Norwalk, CT 06855
(203) 854-5701
www.soundcontrol.net

TITLE: RCWV2-UNI		
SIZE B	DWG. NO. 8UNI-1162Full	REV
NAME	G.E.G.	DATE 6/4/2020
		SHEET 1 OF 1