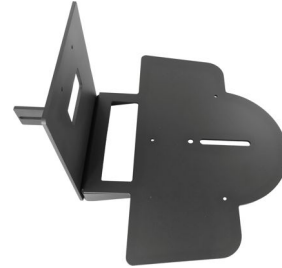


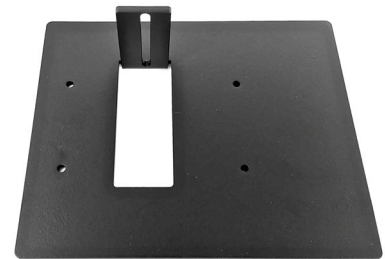


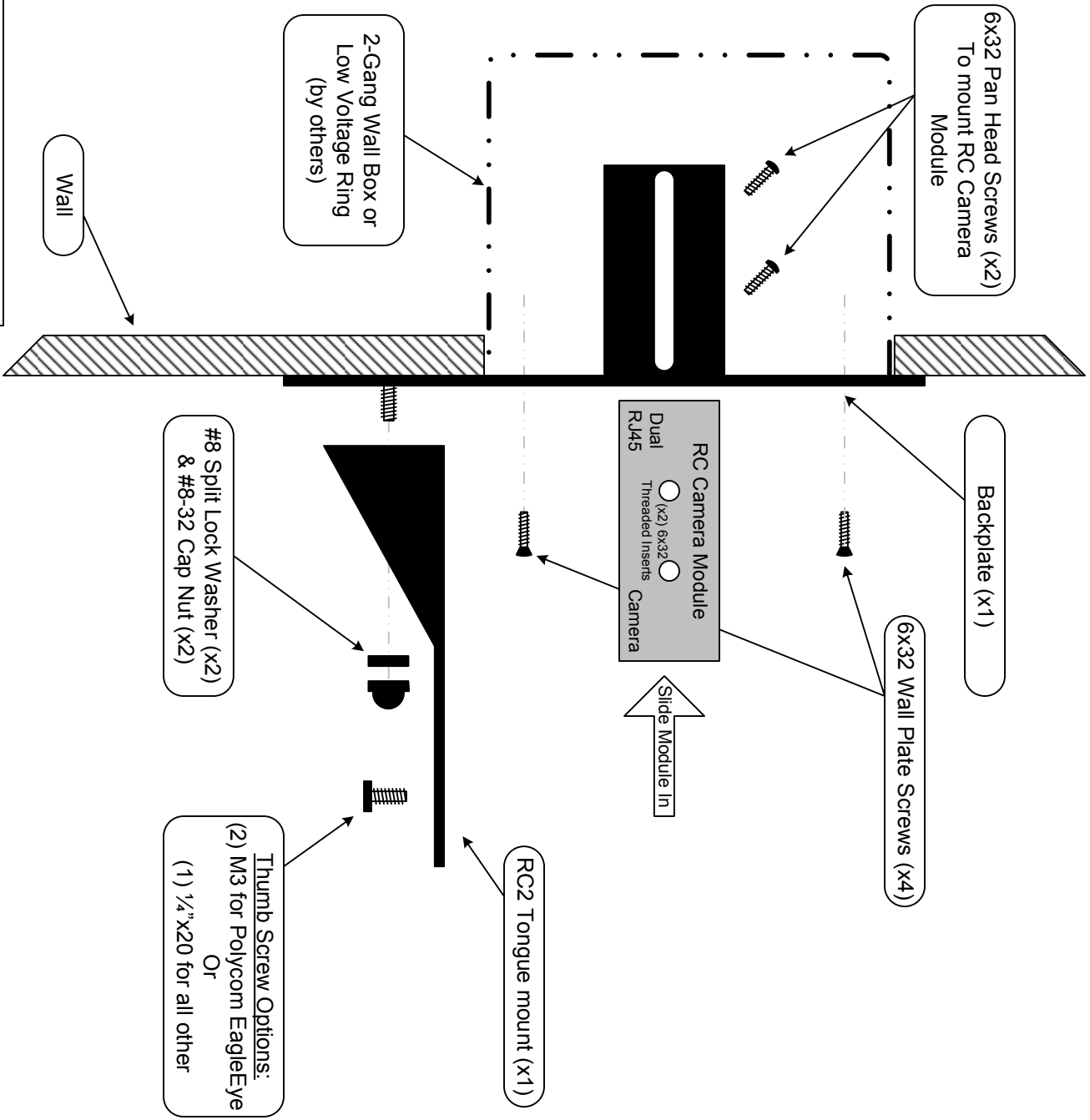
WALL MOUNT KIT RC2-HD1 for Sony EVI-HD1 / Polycom EagleEye 1080



PARTS LIST:

- 1 Tongue Mount (ENC-EV1H-0)
- 1 BackPlate (ENC-1068-UPMT-0)
- 1 H/W Kit:
 - 2pc, 8-32 Black Cap Nuts (5/16 nut-driver)
 - 2pc, #8 Split washer, Black
 - 4pc, 6-32 x 3/4" L, Phillips oval head screw, Black head
 - 2pc, 6-32 x 3/8" L, Phillips pan head, Black screws
 - 1pc, 1/4-20 x 3/8" Thumb screws, Black knurl, 3/8" dia., 18-8 stainless
- 1 Installation Instruction





6x32 Pan Head Screws (x2)
To mount RC Camera Module

Backplate (x1)

6x32 Wall Plate Screws (x4)

RC Camera Module
Dual R145 Camera
or
(x2) 6x32 Threaded Inserts

Slide Module In

RC2 Tongue mount (x1)

2-Gang Wall Box or Low Voltage Ring (by others)

Wall

#8 Split Lock Washer (x2) & #8-32 Cap Nut (x2)

Thumb Screw Options:
(2) M3 for Polycam EagleEye Or
(1) 1/4"x20 for all other

NOTICE:
THIS DOCUMENT HAS BEEN RELEASED FOR REVIEW ONLY.

NO TRANSFER OF OWNERSHIP IS INTENDED OR IMPLIED.
THIS DOCUMENT CONTAINS INFORMATION PROPRIETARY TO SCT AND IS NOT TO BE DISCLOSED OR REPRODUCED WITHOUT PRIOR CONSENT OF SCT.

SCT
Sound Control Technologies
28 Knight Street
Norwalk, CT., USA 06851
Phone (203) 854-5701
Fax (203) 854-5702

RemoteCam2™ / RemoteCam3™
Wall Mount Hardware Assembly
© SOUND CONTROL TECHNOLOGIES, INC. 2014
Rev: 1.1