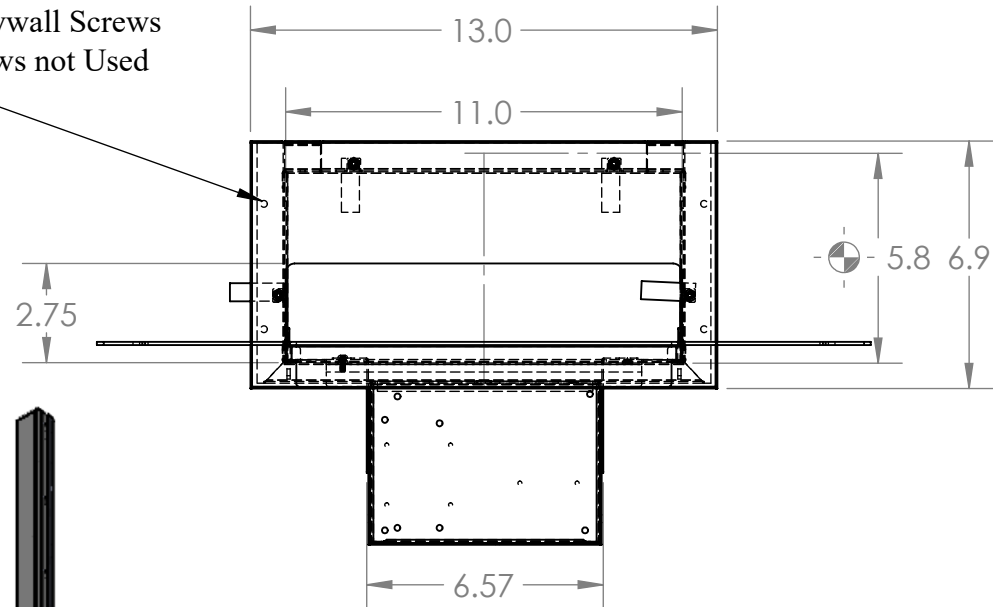
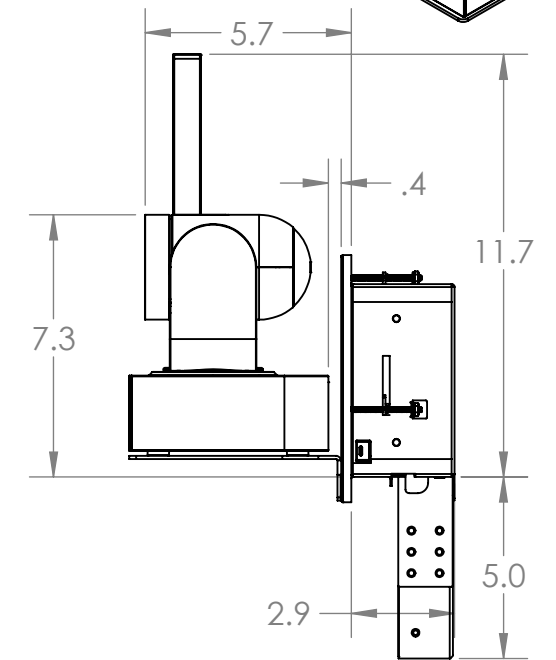
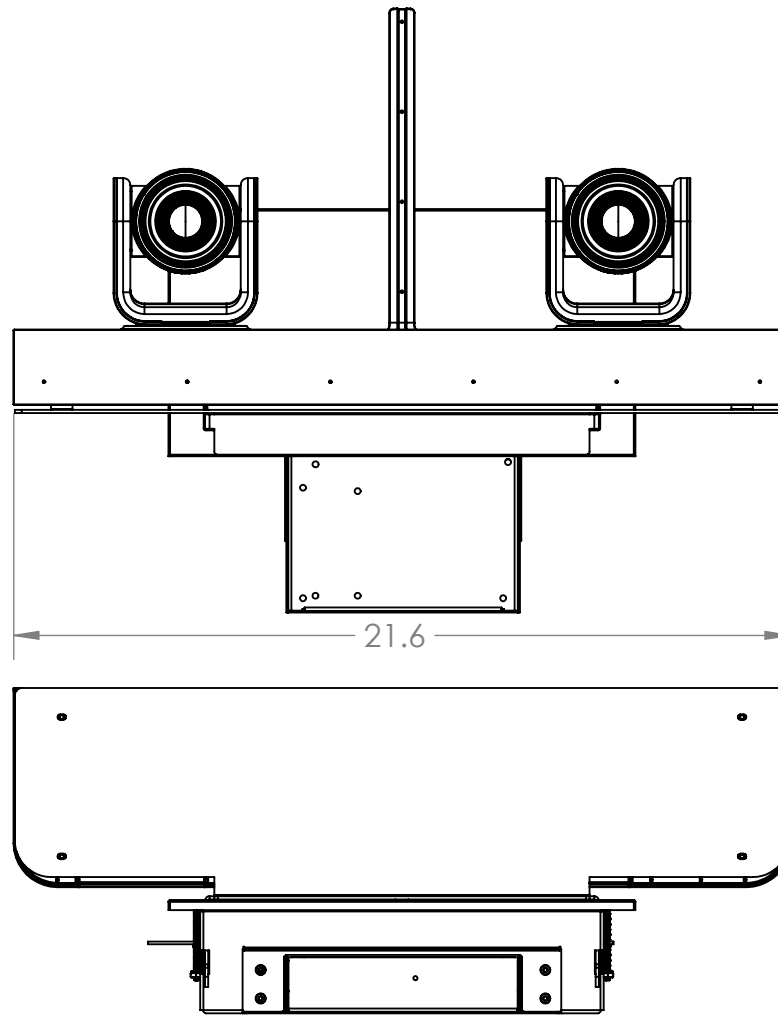


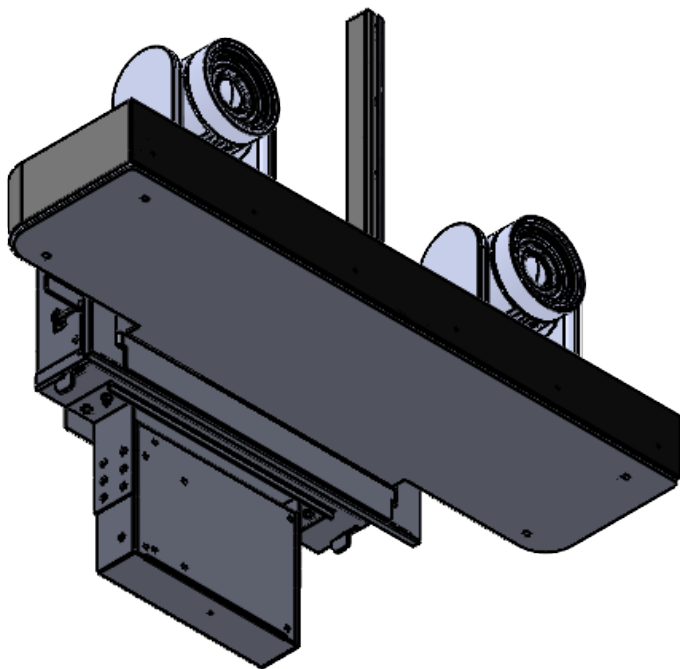
2 Holes Each Side for  
Solid Sub Support Mounting  
Use #6 Flat Head Drywall Screws  
or Similar When Paws not Used



 **Q** of LENS  
When Box resting on Cut-Out



Wall Cut-Out  
See Templet  
provided with  
Wall Box.



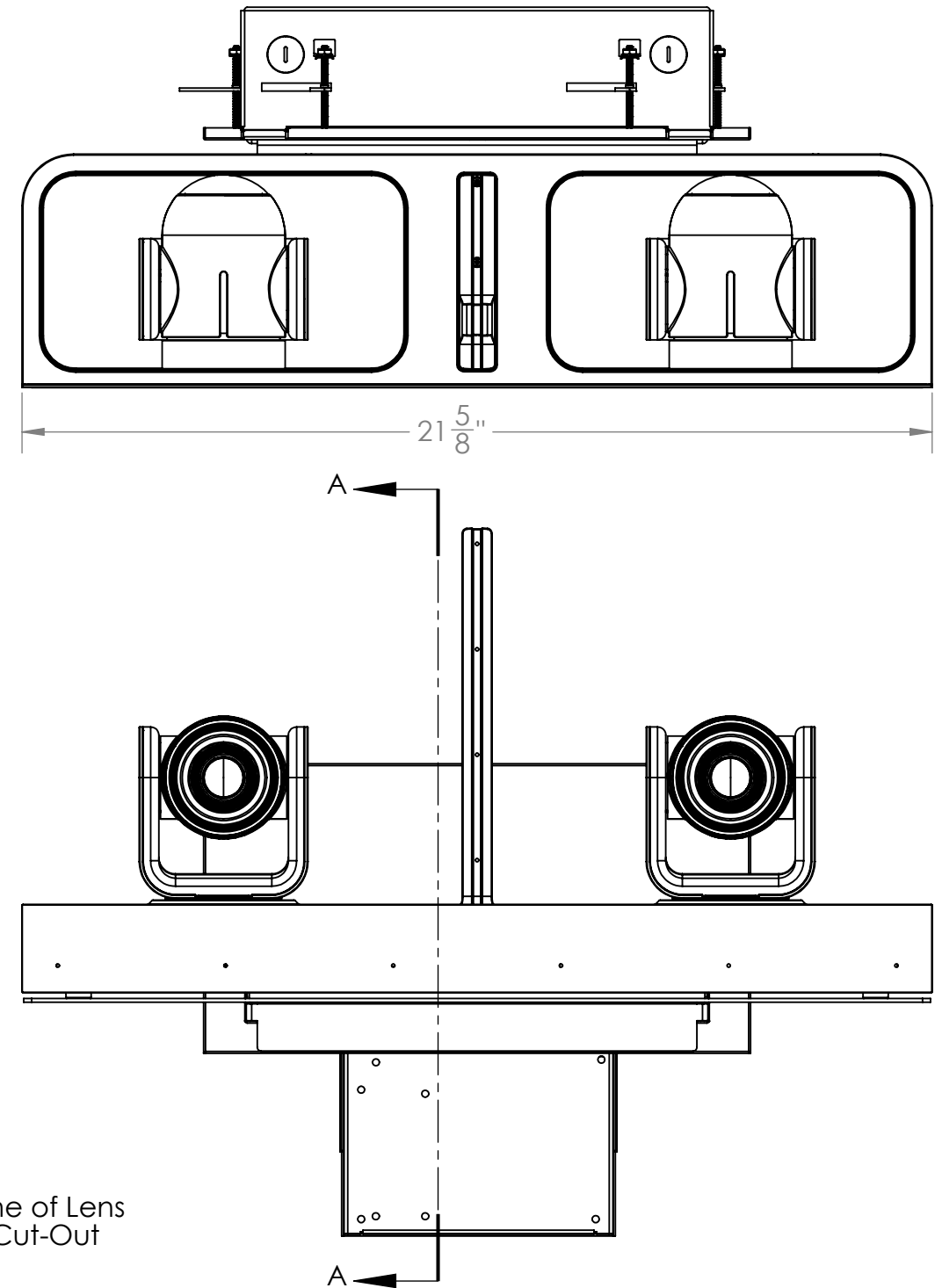
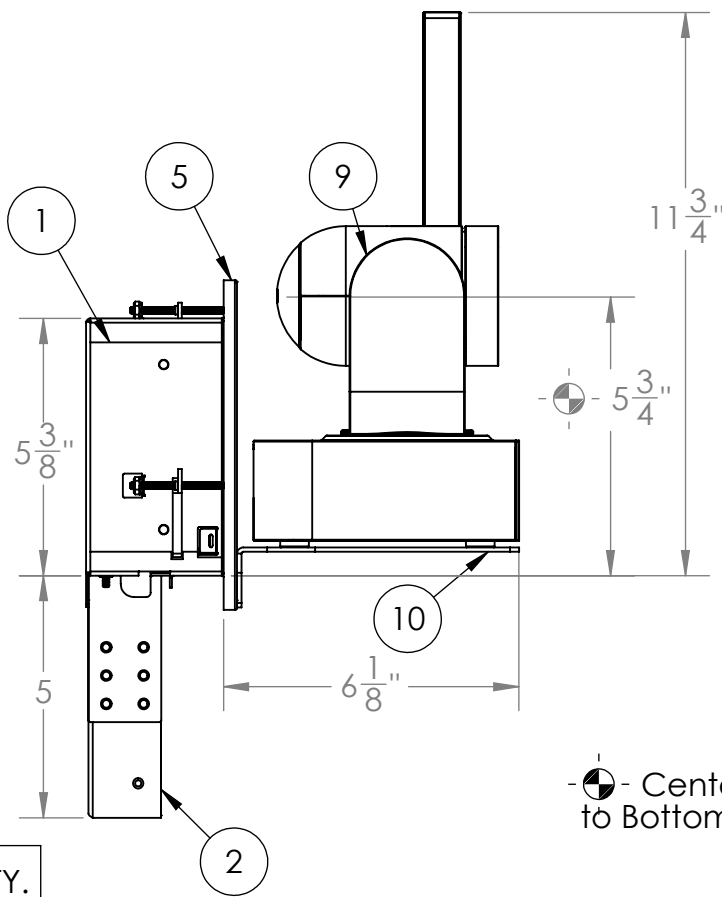
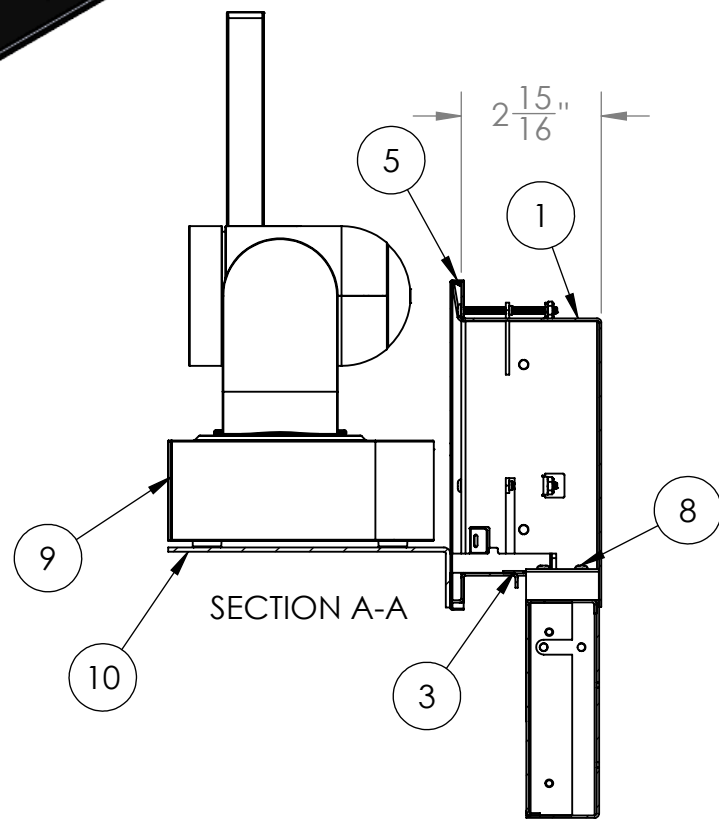
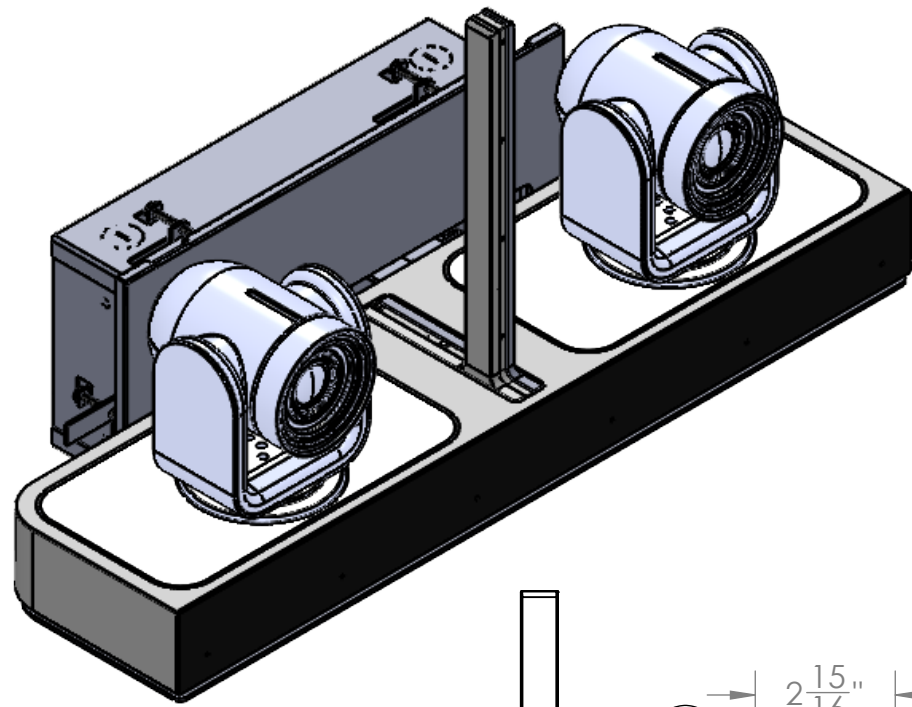
**PROPRIETARY AND CONFIDENTIAL**  
THE INFORMATION CONTAINED IN THIS  
DRAWING IS THE SOLE PROPERTY OF  
Sound Control Tech. ANY  
REPRODUCTION IN PART OR AS A WHOLE  
WITHOUT THE WRITTEN PERMISSION OF  
Sound Control Tech IS PROHIBITED.

UNLESS OTHERWISE SPECIFIED:  
DIMENSIONS ARE IN INCHES  
TOLERANCES:  
FRACTIONAL ± 1/32"  
ANGULAR: MACH ± .25° BEND ± .5°  
TWO PLACE DECIMAL ± .02  
THREE PLACE DECIMAL ± .010  
HOLE SIZE +.003 / -.000  
INTERPRET GEOMETRIC  
TOLERANCING PER:  
MATERIAL  
FINISH  
DO NOT SCALE DRAWING

NAME	DATE
G.E.G.	
DRAWN	
CHECKED	
ENG APPR.	
MFG APPR.	
Q.A.	
COMMENTS:	

**SCT** Sound Control Technologies  
22 South Smith Street  
Norwalk, CT 06855  
(203) 854-5701  
[www.soundcontrol.net](http://www.soundcontrol.net)

TITLE: <b>Cubby 01EE Director 2 Dimensions</b>		
SIZE <b>B</b>	DWG. NO. Cubby01EEIV	REV
SCALE: 3:16	WEIGHT:	SHEET 1 OF 2



ITEM NO.	PART NUMBER	DESCRIPTION	QTY.
1	ENC-BRCR-BBX1-0	Back Box	1
2	RC7-CE	Camera End	1
3	ENC-BRCR-ADA1-0	CUBY RC8 Adapter Plate	1
4	90910A514	LPBHT-T10 6-32X2"	4
5	ENC-BRCR-BBZ1-0	Bezel	1
6	ENC-1068-EE01-0-4	PAW LATCH	4
7	90633A007	6-32 NUT (THIN NYLOCK)	4
8	90910A511	LPBHT-T10 6-32X3/8"	4
9	VISAGE_MAIN_PCB	Camera	1
10	ENC-CUBY-EED2-0	Cubby Camera Plate Poly EED2 Camera	1

**PROPRIETARY AND CONFIDENTIAL**  
 THE INFORMATION CONTAINED IN THIS DRAWING IS THE SOLE PROPERTY OF Sound Control Tech. ANY REPRODUCTION IN PART OR AS A WHOLE WITHOUT THE WRITTEN PERMISSION OF Sound Control Tech. IS PROHIBITED.

UNLESS OTHERWISE SPECIFIED:	NAME	DATE
DIMENSIONS ARE IN INCHES	G.E.G.	2/21/2020
TOLERANCES:		
FRACTIONAL ± 1/32"		
ANGULAR: MACH ± .5 BEND ± 1		
TWO PLACE DECIMAL ± .02		
THREE PLACE DECIMAL ± .010		
INTERPRET GEOMETRIC TOLERANCING PER:		
MATERIAL		
FINISH		
DO NOT SCALE DRAWING		

DRAWN	ENG APPR.	MFG APPR.	Q.A.	COMMENTS:

**SCT** Sound Control Technologies  
 22 South Smith Street  
 Norwalk, CT 06855  
 (203) 854-5701  
[www.soundcontrol.net](http://www.soundcontrol.net)

TITLE: <b>Cubby Mount Poly Director II</b>		
SIZE <b>B</b>	DWG. NO. Cubby01EEIV	REV
SCALE: 3:16	WEIGHT:	SHEET 2 OF 2